

# AMS<sup>TM</sup> Suite: Intelligent Device Manager Engineering Assistant SNAP-ON<sup>TM</sup> Application

- Download flow configurations for better control of your process
- Configure, maintain, diagnose, and test Rosemount Multivariable Transmitters

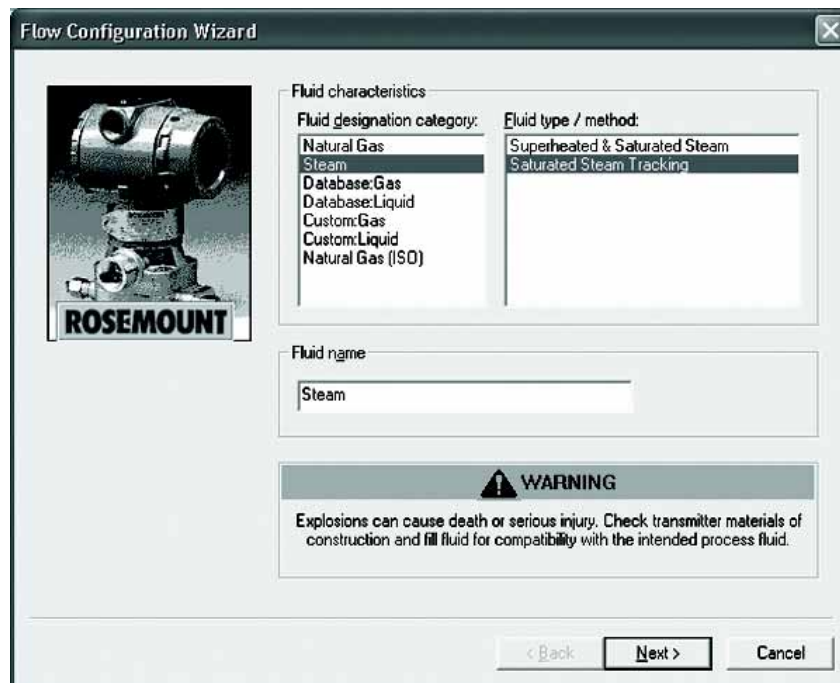


FIGURE 1. Quickly configure multivariable transmitters to measure mass flow of virtually any process.

## Perform Extended Functions

The Engineering Assistant SNAP-ON application enables you to perform extended configuration, maintenance, diagnostics, and test calculation functions on Rosemount Multivariable Transmitters, Mass ProBar and Mass ProPlate Flowmeters.

The Engineering Assistant SNAP-ON application is required to download flow configurations to Rosemount multivariable transmitters.

## Quick Measurement of Mass Flow

Easily modify multivariable transmitter configurations and densities to improve product quality and reduce by-product formation or quickly get a process up and running. Engineering time is saved because plant engineers do not have to calculate viscosities, densities, flow equations, and related mass flow calculations.

Save time and money with the Engineering Assistant SNAP-ON application through faster setup, reduced chances of improperly configured flow transmitters, and accurate device measurements.

**ROSEMOUNT<sup>®</sup>**

[www.rosemount.com](http://www.rosemount.com)

  
**EMERSON<sup>™</sup>**  
Process Management

### Offline or Online Mode

The Engineering Assistant SNAP-ON application runs on AMS Suite: Intelligent Device Manager and can be used in either an online or offline mode. In an online mode, the Engineering Assistant SNAP-ON application communicates directly with the multivariable transmitter through AMS Device Manager. In offline mode, the Engineering Assistant SNAP-ON application does not communicate directly with the transmitter. Instead, you can create a configuration to send to a transmitter later when the Engineering Assistant SNAP-ON application is in online mode.



AMS Suite: Intelligent Device Manager powers PlantWeb through predictive and proactive maintenance of intelligent field devices to improve availability and performance.

### Seamless Integration with AMS Device Manager

Since the Engineering Assistant SNAP-ON application is part of AMS Device Manager, you receive all the benefits of having a single software package and database for all your plant instrumentation. You can easily make calibration and configuration changes, access predictive diagnostics, and monitor multiple devices using a single tool.

AMS Device Manager enables you to reduce maintenance costs by detecting and diagnosing potential device problems before they can affect the process. Reduce planned shutdowns and trips to the field to focus your resources on higher-value activities.

*The Emerson logo is a trade mark and service mark of Emerson Electric Co.  
Rosemount and the Rosemount logotype are registered trademarks of Rosemount Inc.  
PlantWeb, SNAP-ON, and AMS are a mark of one of the Emerson Process Management companies.  
All other marks are the property of their respective owners.*

*Standard Terms and Conditions of Sale can be found at [www.rosemount.com/terms\\_of\\_sale](http://www.rosemount.com/terms_of_sale)*

### Emerson Process Management

**Asset Optimization Division**  
12001 Technology Drive  
Eden Prairie, MN 55344 USA  
T 1(952) 828-3206  
F 1(952) 828-3033

[www.assetweb.com](http://www.assetweb.com)



**EMERSON**  
Process Management